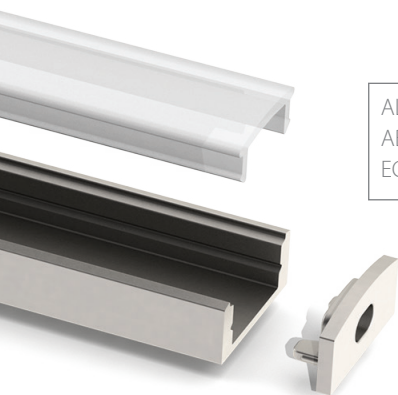




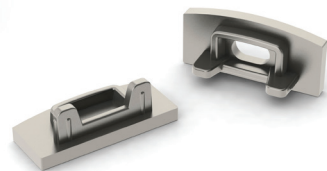
AL-SL7
AB-SL
MC-SL7
EC-SL7



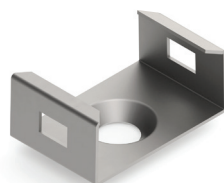
AL-SL7
AB-SL



AL-SL7
AB-SL
EC-SL7



EC-SL7
End Caps



MC-SL7
Mounting Bracket

SLIM LINE 7 mm

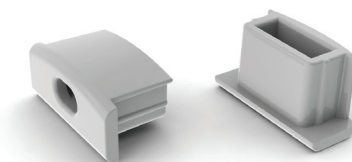
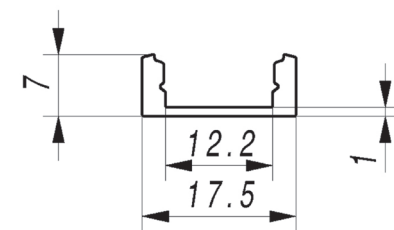
SL7; 7 x 17,5mm

FEATURES:

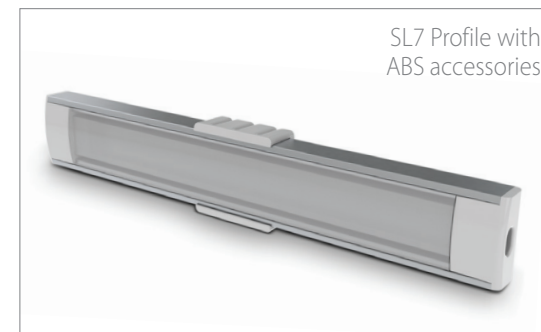
- High quality diffuser, placing/removing from front on click
- Walk on safe diffuser, UV resistant polycarbonate diffuser
- Available with opal, 50% opal and transparent diffuser
- Available lengths – 1m, 2m, 3m (large quantity orders)
- Made from anodizing aluminum
- Suitable mostly for flexible led stripes
- For indoor use only
- Low profile only 7mm high

APPLICATIONS:

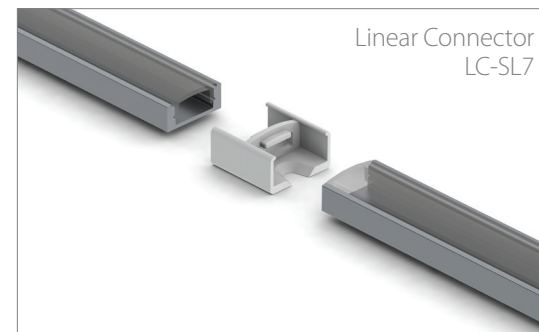
- Furniture production (kitchen / office)
- Interior light design (stairs / storage / floor)
- Stores shelf LED lighting
- Independent LED lamp
- Exhibition boot LED lighting



EC-SL7
End Caps



SL7 Profile with
ABS accessories

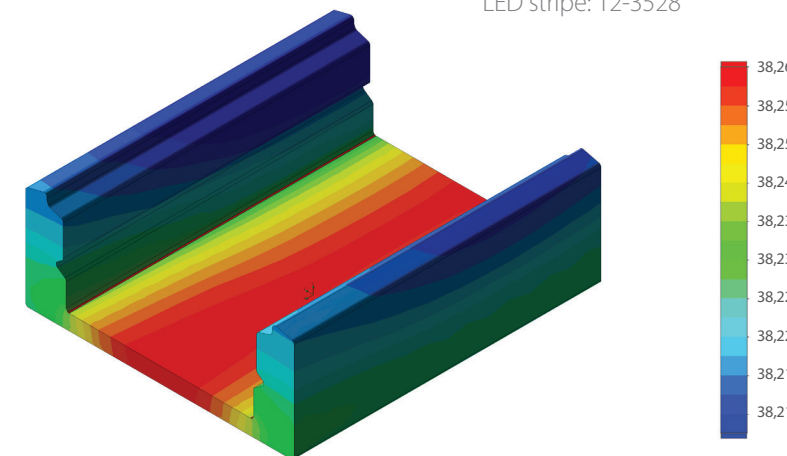


Linear Connector
LC-SL7

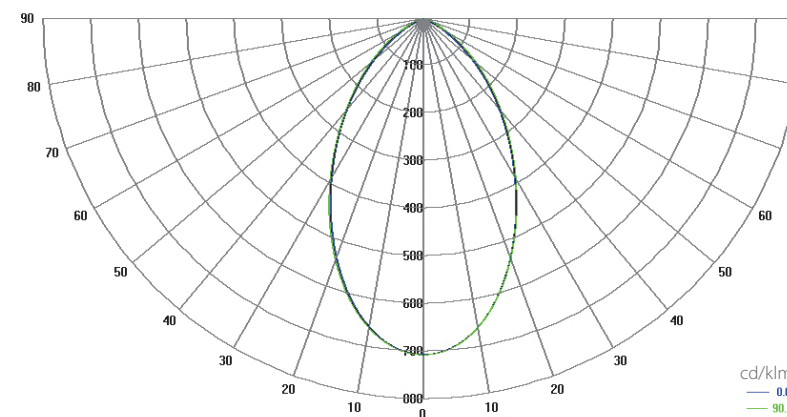
SL7 ANALYSES

Temperature (Solid) [°C]

Temperature ambient: 25°C
Total power: 8 W/m (96 LEDs)
LED stripe: 12-3528



Polar Candela Distribution Plot Using Missed Rays



DESCRIPTION

Slim Line 7mm it is surface mount high quality anodized aluminum LED profile only 7mm high which is dedicated for standard led stripes up to 12mm in the wideness. The profile is performing as the heat sink to the LEDs and appears as nice, stylish housing for the LEDs itself. It comes with choice of three different quality UV resistant, snap-in diffusers, frosted, 50% frosted and transparent. For this SL7 profile we offer several different accessories such as optic lenses, mounting brackets and end caps which helps to professionally finish the profile.

